

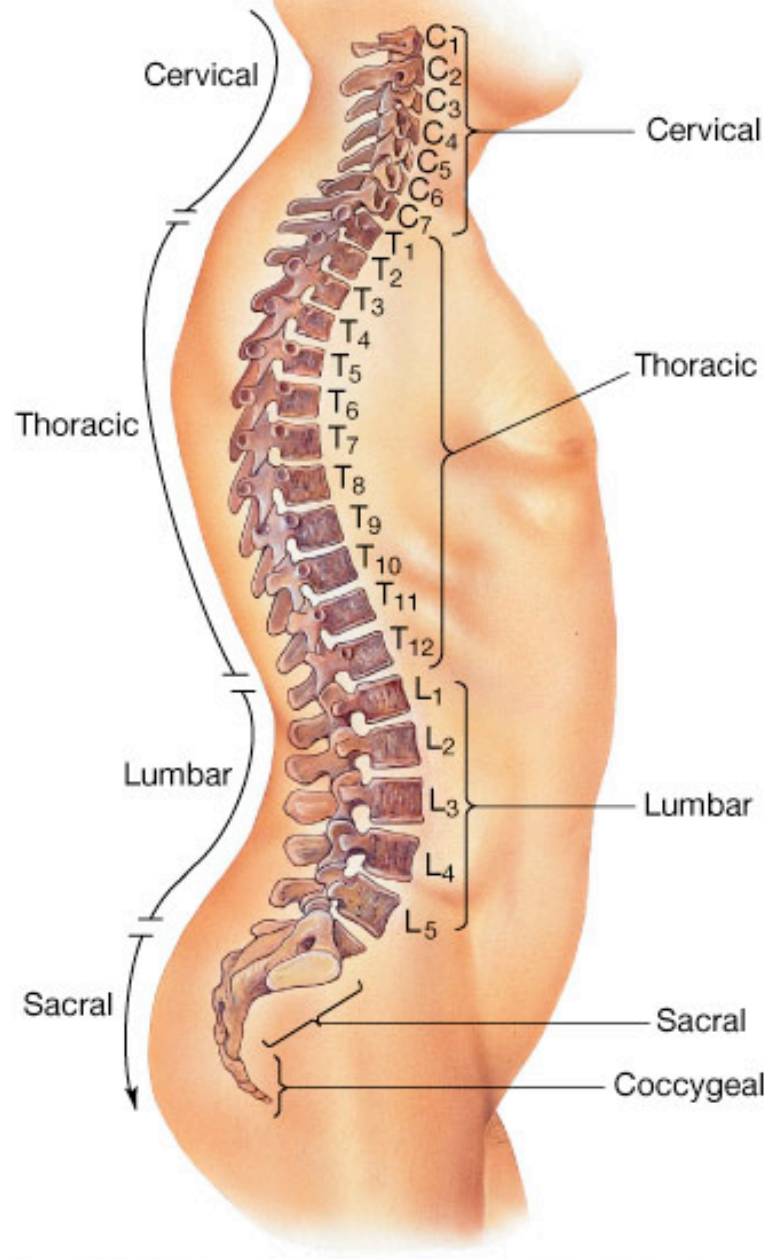
# PHYE 281 - Applied Kinesiology

Image Bank and Study Sheets  
For Lecture 12 - The Trunk and Spinal Column

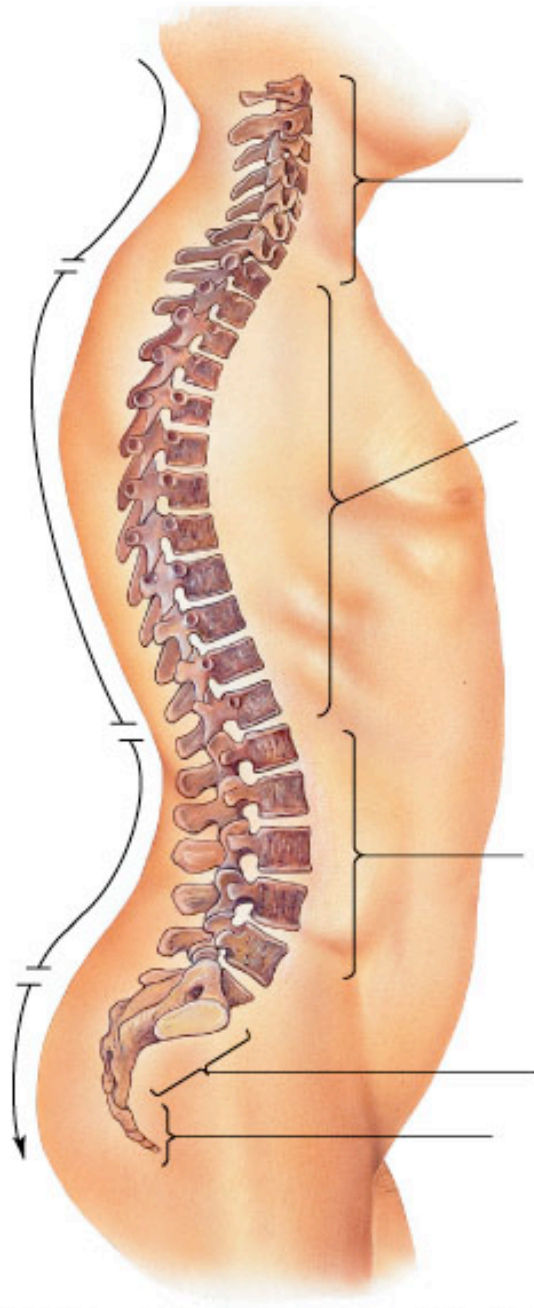
Kevin Petti, Ph.D.  
Department of Natural Sciences  
Health, Exercise Science and Nutrition  
San Diego Miramar College

**Spinal curves**

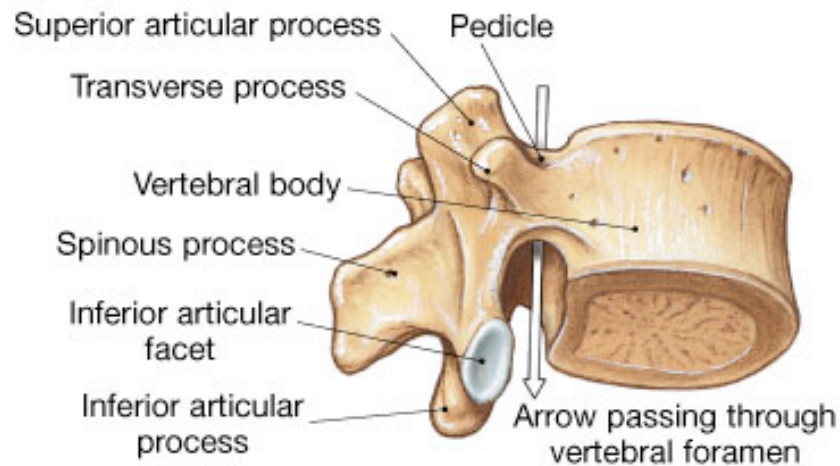
**Vertebral regions**



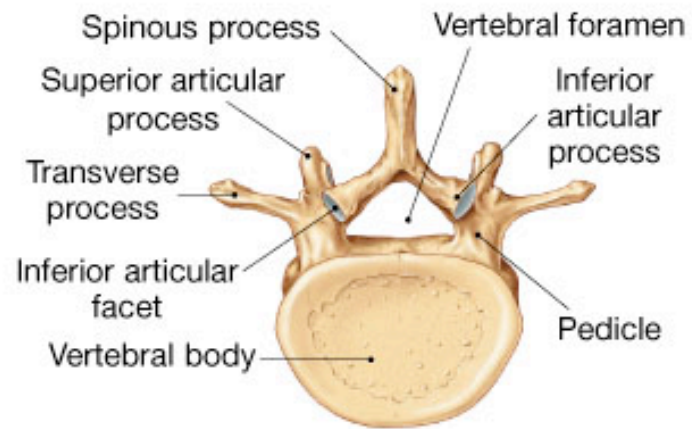
Copyright © 2004 Pearson Education, Inc., publishing as Benjamin Cummings.



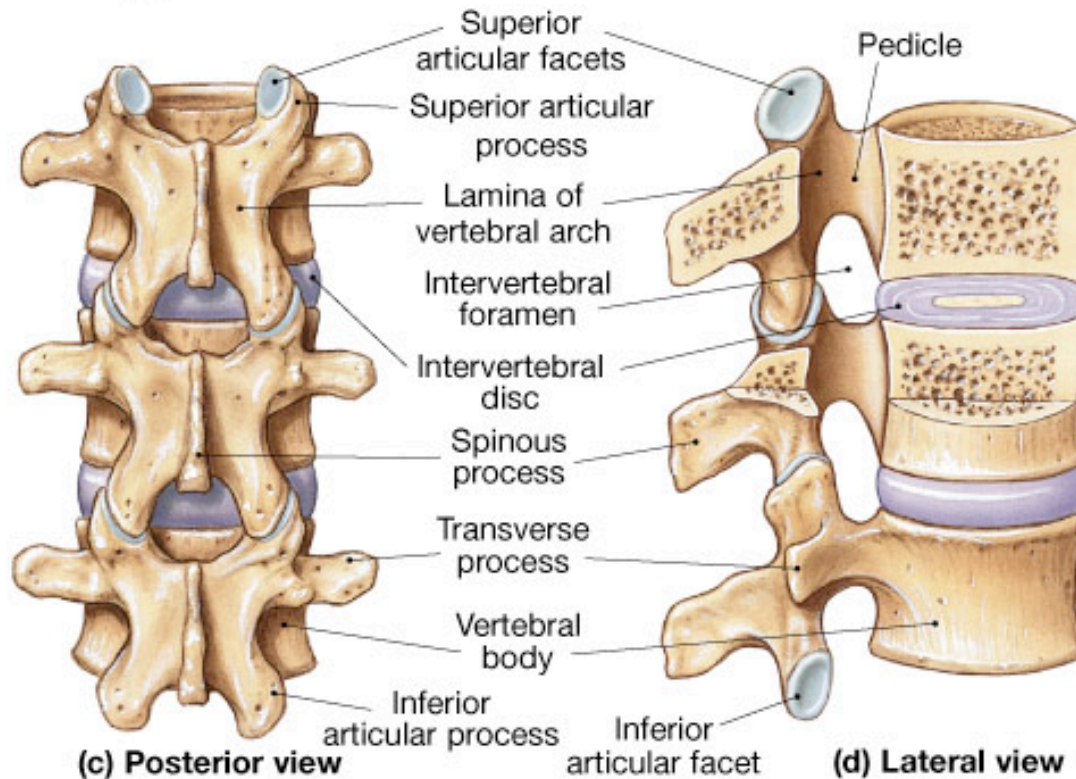
Copyright © 2004 Pearson Education, Inc., publishing as Benjamin Cummings.



**(a) Lateral and inferior view**

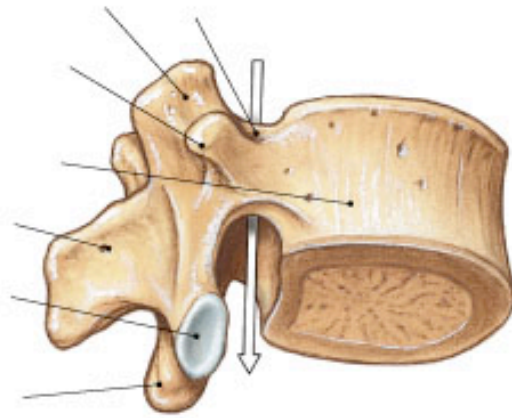


**(b) Inferior view**

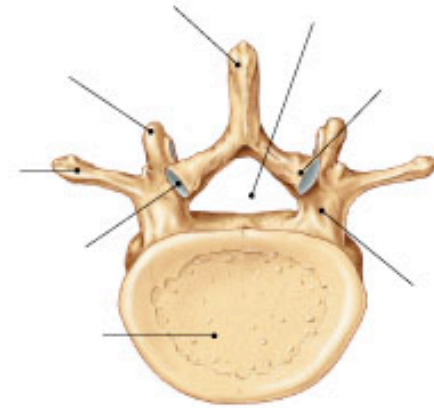


**(c) Posterior view**

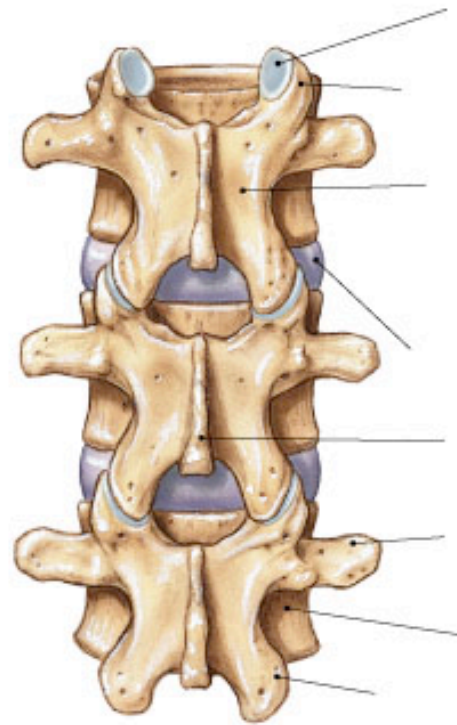
**(d) Lateral view**



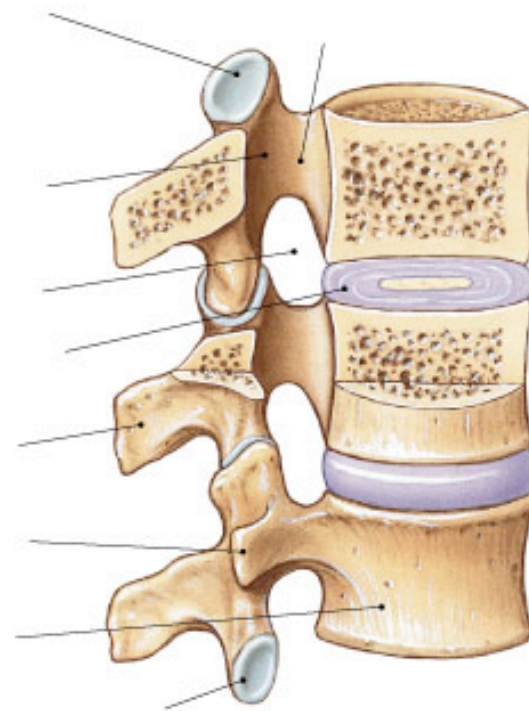
(a)



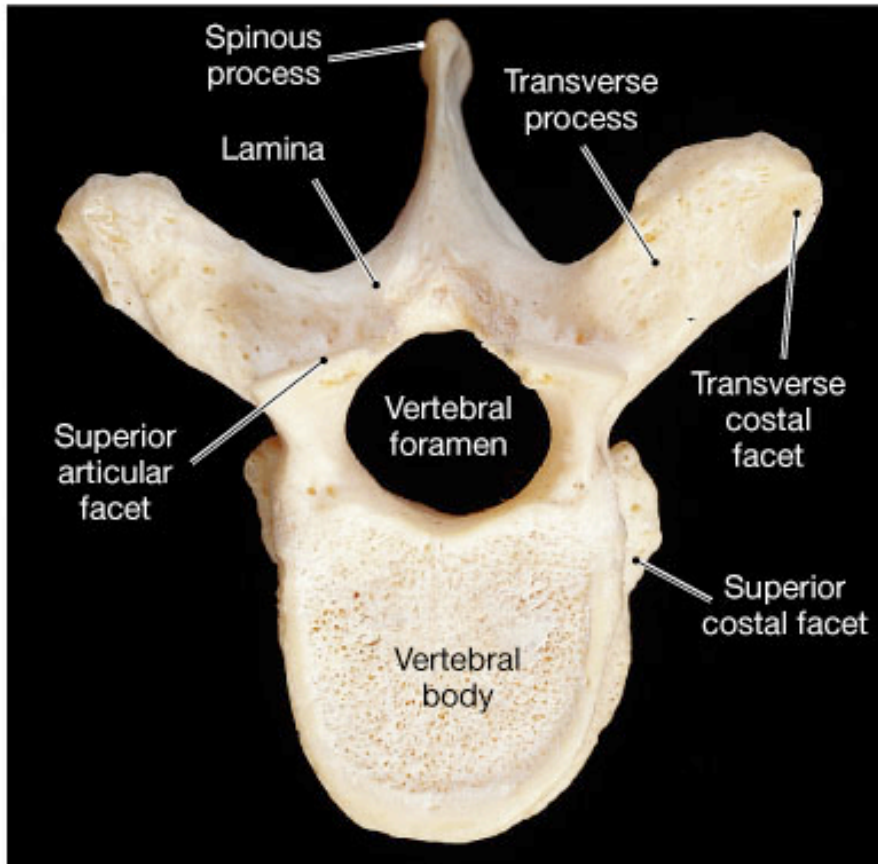
(b)



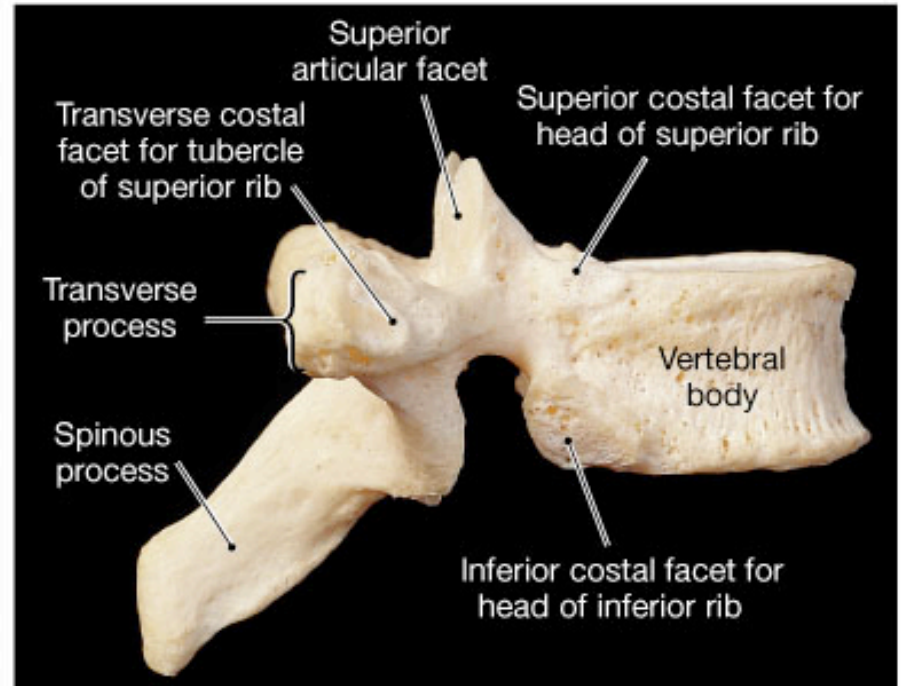
(c)



(d)



**(b) Thoracic vertebra, superior view**

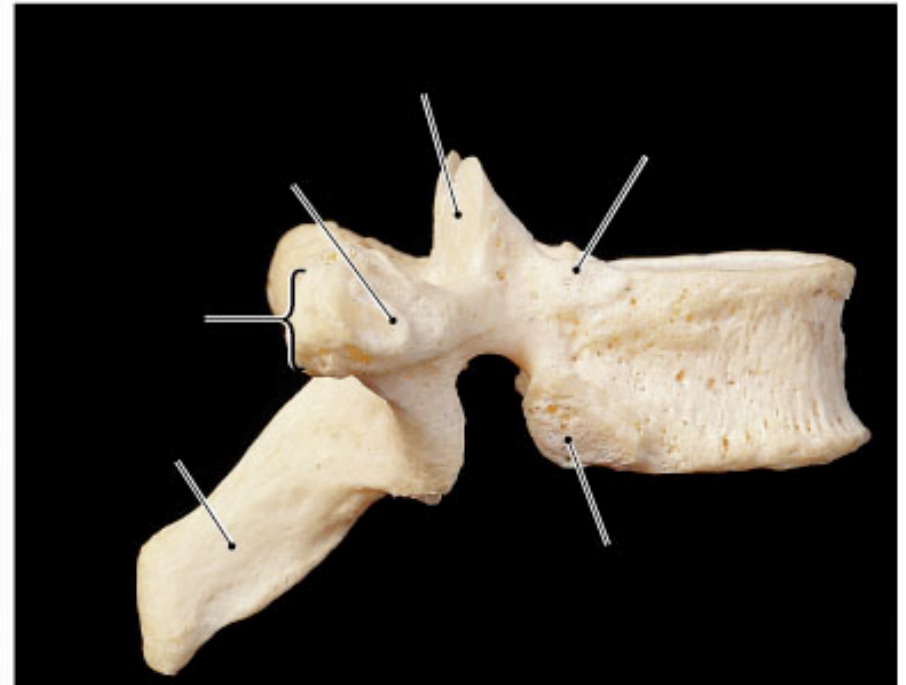


**(c) Thoracic vertebra, lateral view**

Copyright © 2004 Pearson Education, Inc., publishing as Benjamin Cummings.

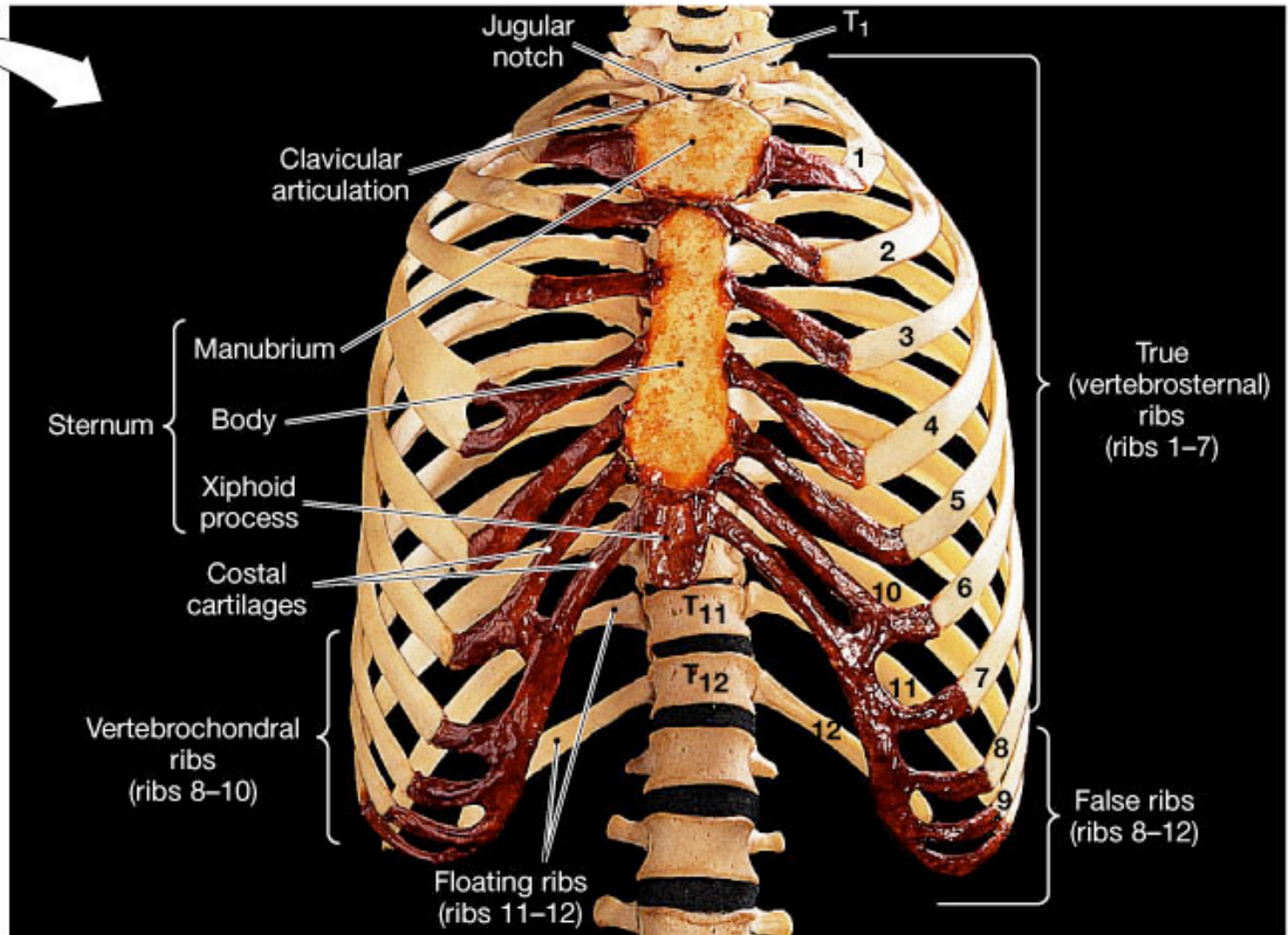
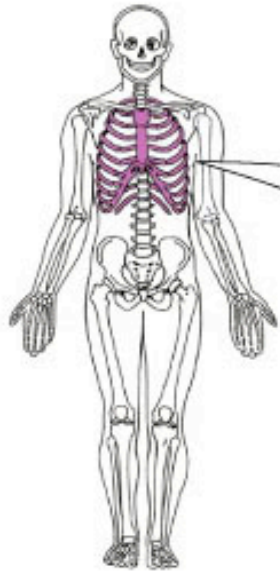


(b)



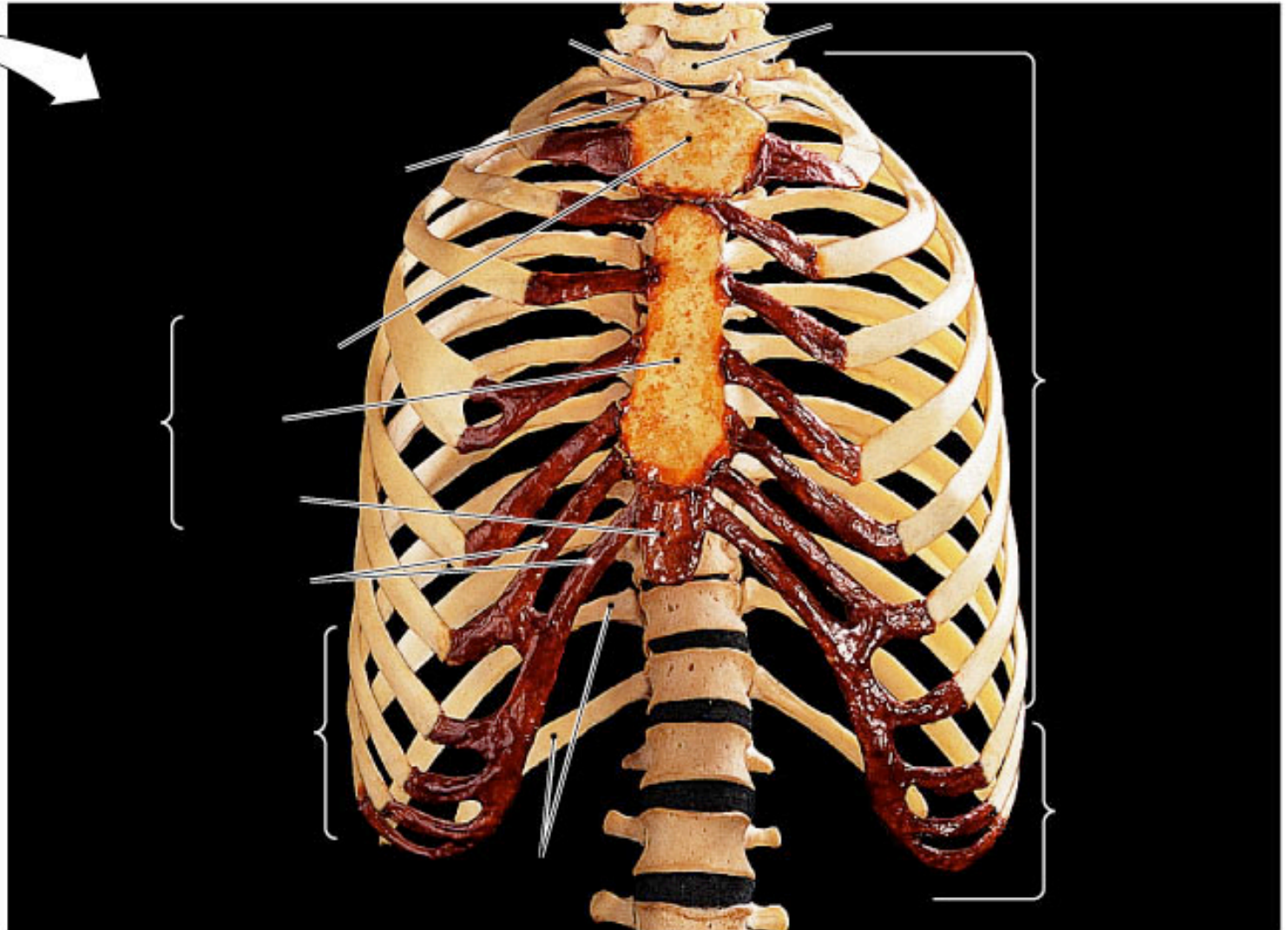
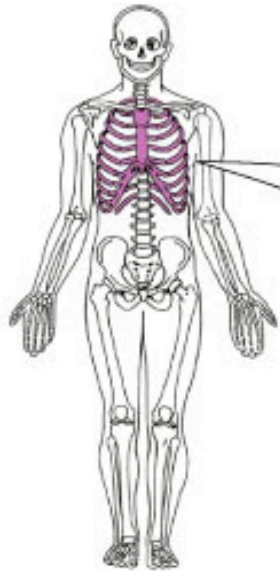
(c)

Copyright © 2004 Pearson Education, Inc., publishing as Benjamin Cummings.

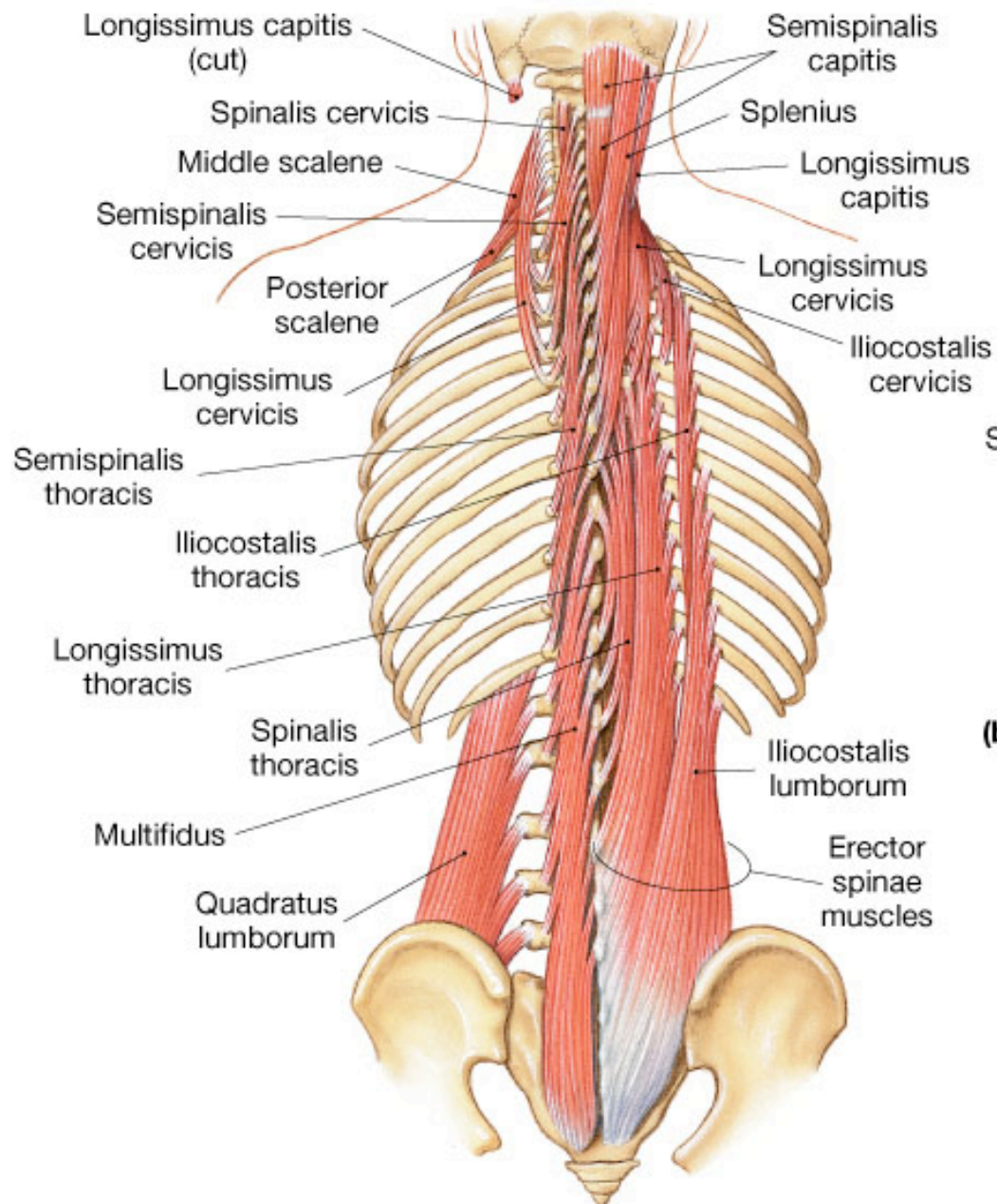


(a) Anteriorview

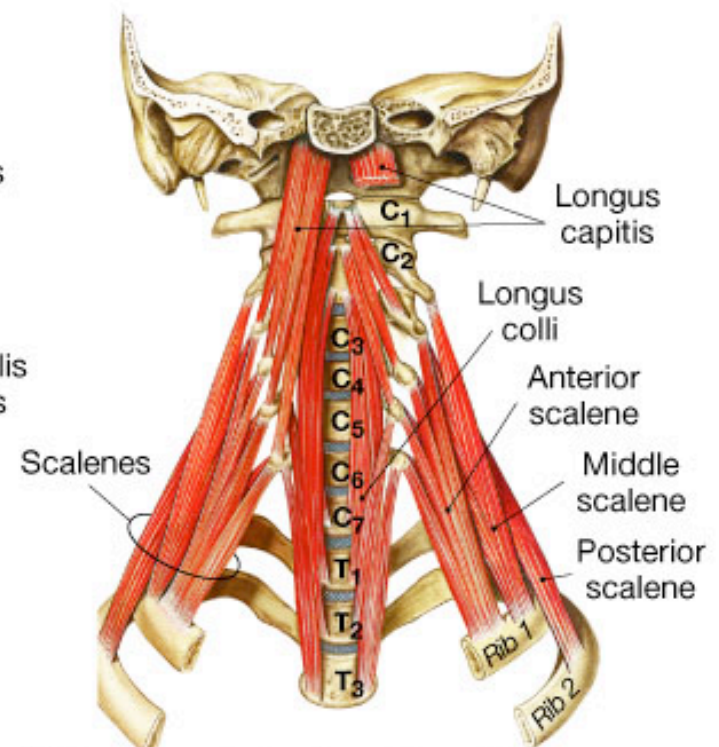




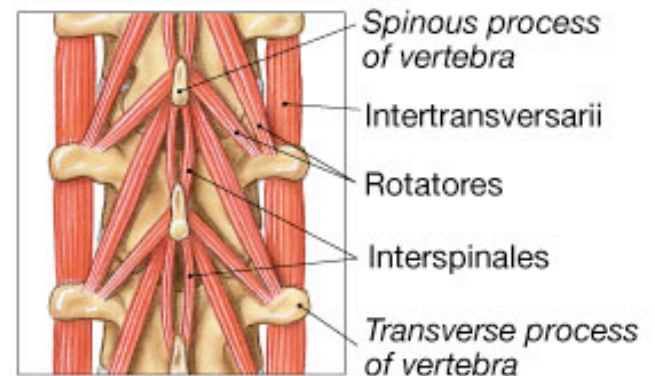
(a)



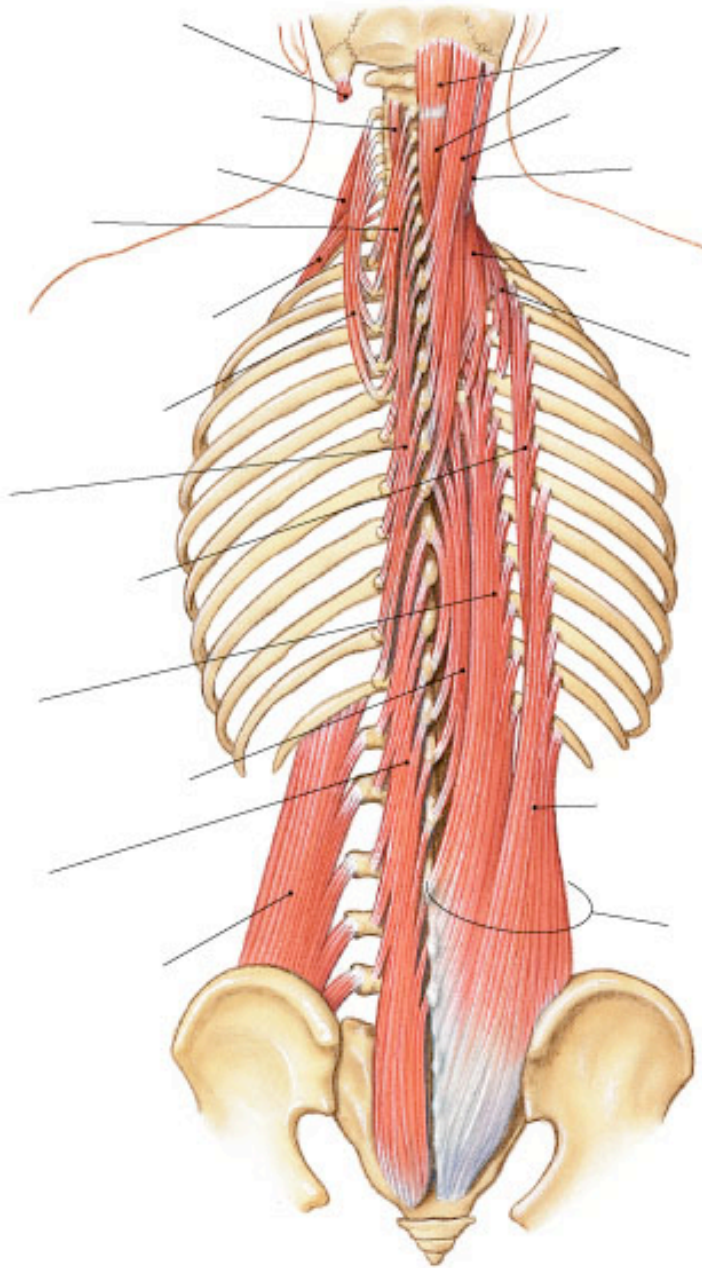
**(a) Posterior view of the superficial muscle layer**



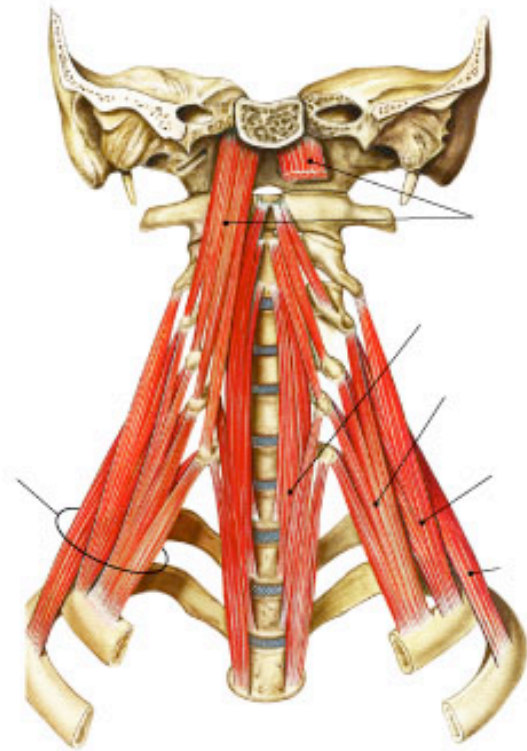
**(b) Muscles arising from the anterior surfaces of the superior vertebrae**



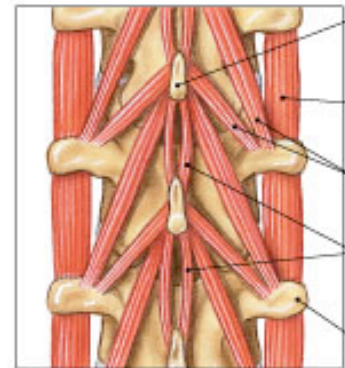
**(c) Intervertebral muscles (posterior view)**



(a)



(b)



(c)